

GENERAL INFORMATION

<i>EWST report #</i>	EW1251
<i>Inspection date</i>	June 20, 2019
<i>Client name</i>	XXX
<i>PO number</i>	XXX
<i>Style number</i>	XXX
<i>Total quantity ordered</i>	340 units
<i>Quantity ready to inspect</i>	340 units
<i>Total inspected</i>	50 units, 14.71%
<i>Exported destination</i>	USA



DEFECTS

STYLE #	DEFECT DESCRIPTION	CR	MA	MI	ND
XXX	Material quality				0
XXX	Creases			1	
XXX	Color quality				GR
XXX	Measurements				GR
XXX	Sharp edges/points			3	
XXX	Cracks				0
XXX	Gas lift defects				0
XXX	Gas lift functionality				0
XXX	Gas lift noise				0
XXX	Wheel functionality			1	
XXX	Scratches			4	
XXX	Stains		1	1	
XXX	Marks/Mold marks				GR
XXX	Spraying/painting quality				0
XXX	Electroplating/finishing quality				0
XXX	Uncut threads			6	
XXX	Frame quality		3		
XXX	Packaging				0
XXX	Other				0
TOTAL DEFECTS FOUND		0	4	16	0

REMARKS

- Seat Height/General Remark:** seat height is approx. 1cm higher than provided measurement chart standard. See pictures #5 - #8 on pages 4 and 5. For other measurements, please refer to pictures #1 - #14 on pages 4 and 5.
- Mold Marks/General Remark:** same as per previous orders, mold marks found on the back side of the chair underneath the frame. While these marks are unavoidable, EWST team instructed the factory to smoothen out all the marks and add black spray if needed. See pictures #13 - #15 on page 6.
- Creases: the fabric on the seat had a slight crease in the centre, repaired on site. See picture #16 on page 6.
- Color Quality/General Remark:** the production's new blue color is very close to the last production's color. See pictures #17 - #18 on page 6.

REMARKS

6. Frame Quality: the backs of three frames looked slightly brushed off, having the line. All three frames were replaced, see pictures #19 - #20 on page 7.
7. Uncut Threads: repaired on site. The factory was instructed to go through all the production again and check for uncut threads. See pictures #21 - #22 on page 7.
8. Scratches: minor, repaired on site. See pictures #23 - #26 on pages 7 and 8.
9. Stains: cleaned on site, see pictures #27 - #28 on page 8.
10. Sharp Edges: repaired on site, see pictures #29 - #30 on page 8.
11. Wheel Functionality: one castor was not functioning very smoothly, repaired on site.

ON-SITE TESTS

###	Description	Method	Result (P/F)
1	Loading Test on Seat	130kg load on the center of the seat for 1 hour	Pass
2	Back strength test	56kg force applied to the back of the chair going backward for 1 minute	Pass
3	Impact test	Set the chair to the highest level, 136kg free drop for one time on the seat from 152mm height; Set the chair to the lowest level and repeat the test one time	Pass
4	Wobble Test	Place units onto a flat surface	Pass
5	Loading test on base	Fix the base, 1112kg force applied on the base for 1 minute; uninstall and repeat	Pass
6	Castor durability	Use professional equipment to test castor durability	Pass
7	Tilt mechanism test	Use professional equipment to test tilt quality	Pass
8	Raw materials test	Use professional equipment to test raw material quality before mass production	Pass
9	Assembly Check	Assemble the unit according to the descriptions (e.g. user manual) - must be easy to assemble	Pass
10	Accessories Check	Based on parts listed on the instruction sheet	Pass

INSPECTION PHOTOS



#1



#2



#3



#4



#5



#6



#7



#8



#9



#10



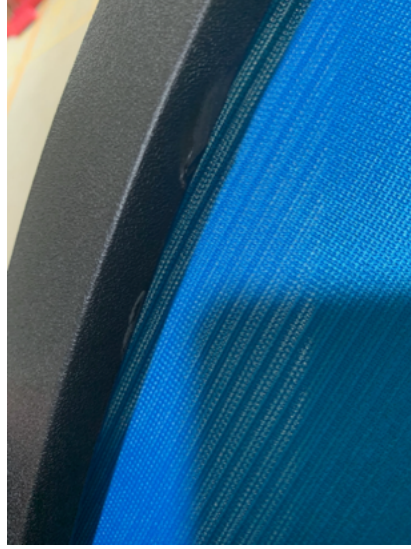
#11



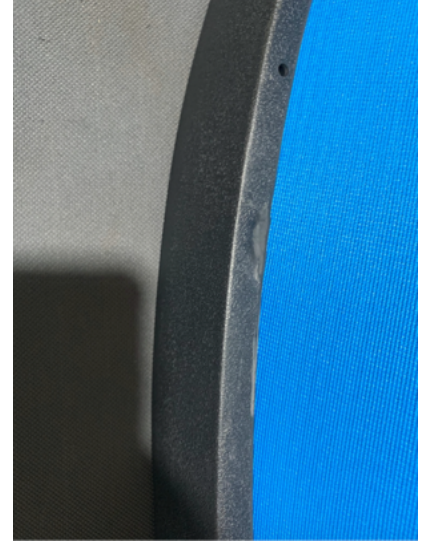
#12



#13



#14



#15



#16



#17

Left: last production's color swatch vs Right: current production

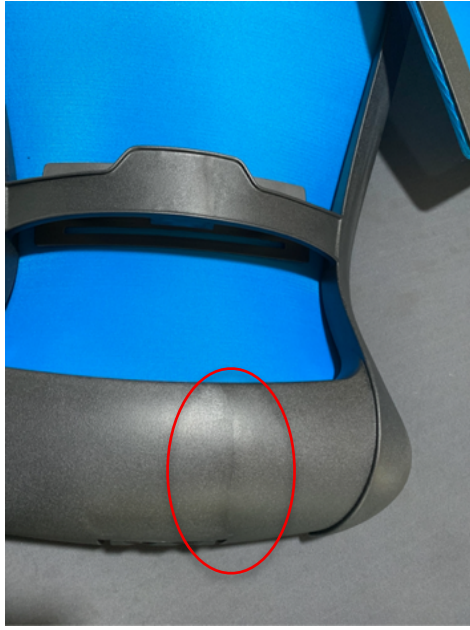


#18

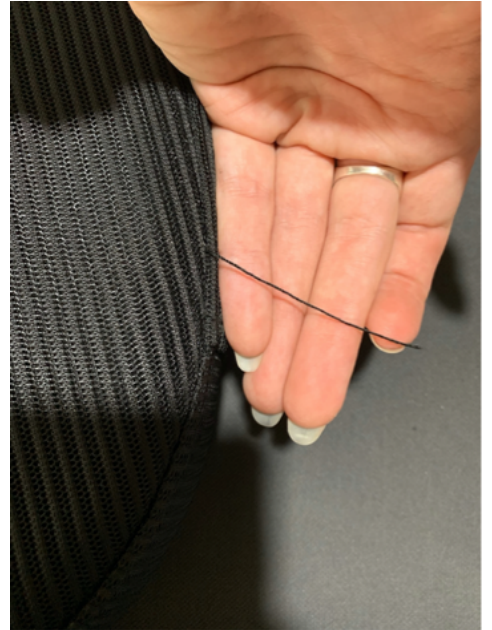
Left: last production's color swatch vs Right: current production



#19



#20



#21



#22



#23



#24



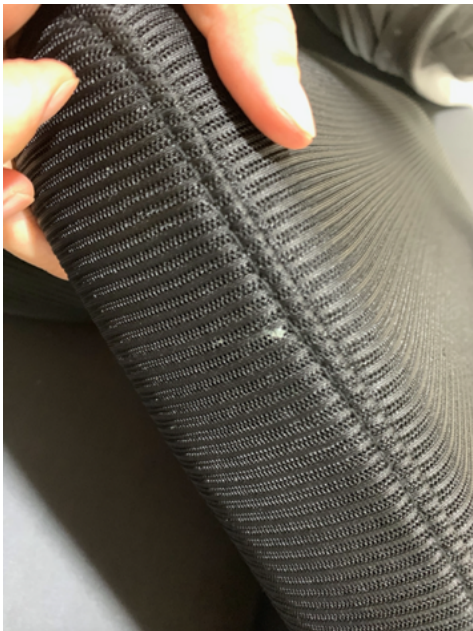
#25



#26



#27



#28



#29



#30

ACCESSORIES CHECK, ASSEMBLY & PACKAGING PHOTOS



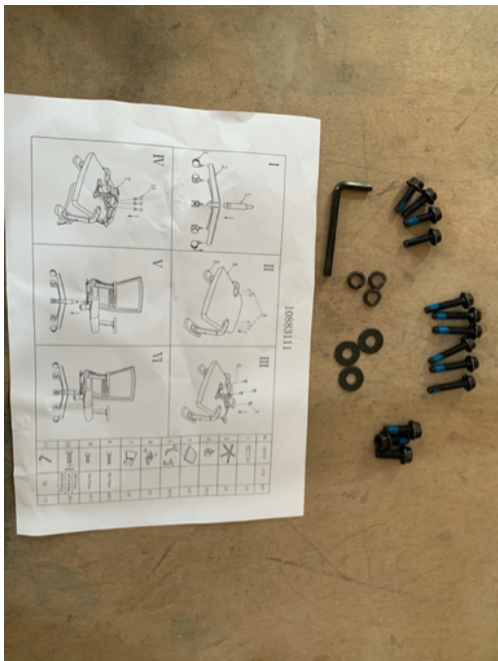
#31



#32



#33



#34



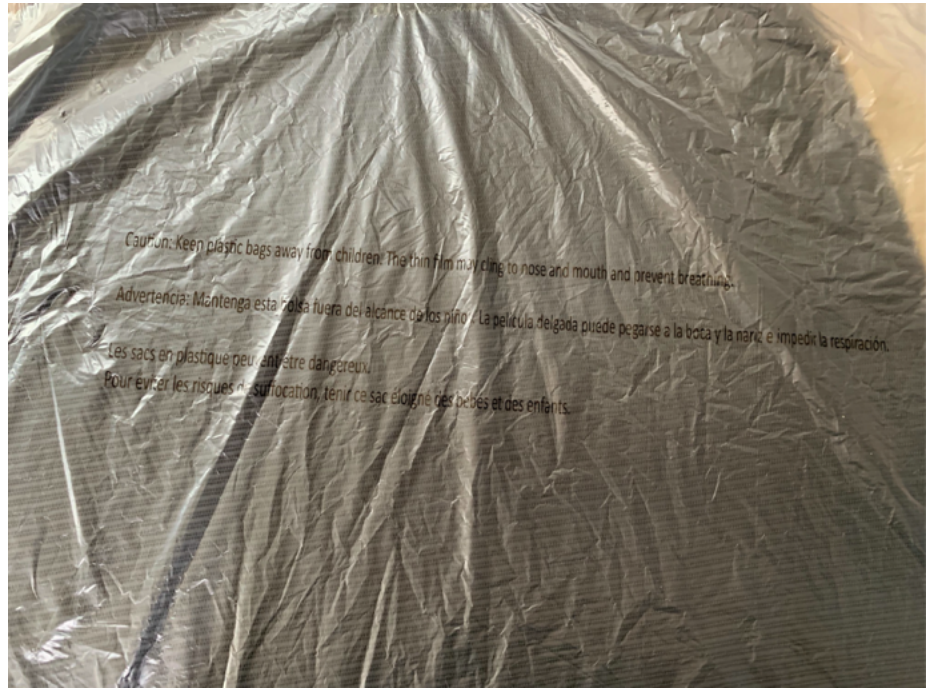
#35



#36



#37



#38



#39



#40



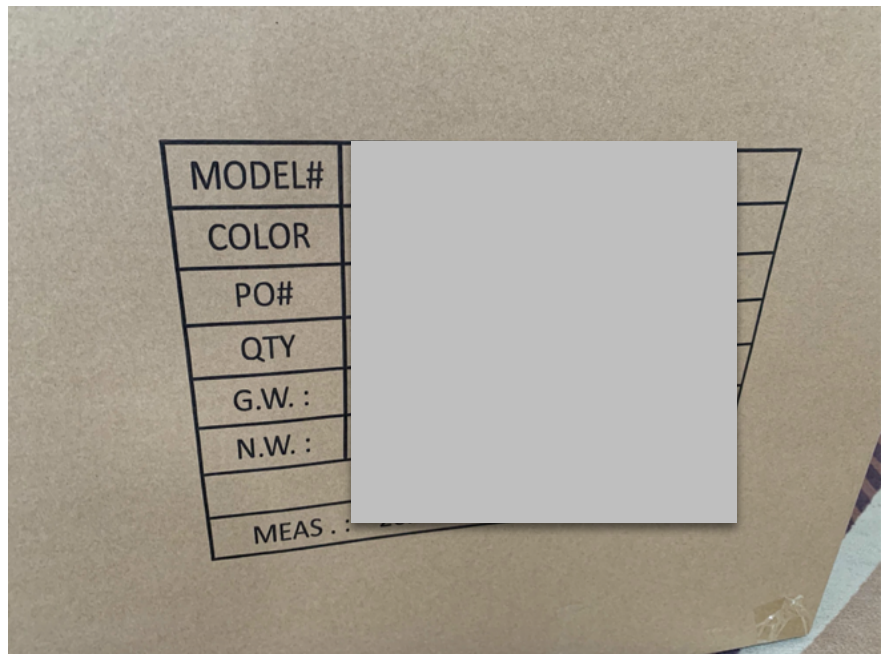
#41



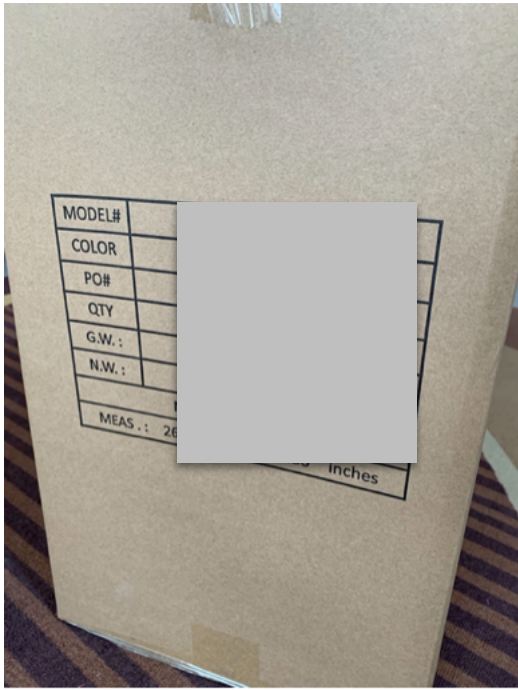
#42



#43



#44



#45



#46